

Annual Report

bioRe[®] Foundation **2022/23**





«For **balance** between
humans and nature»



Content

Vision
1

The right to
development
2

Editorial
3

What we do
4

Our
partners
5

Review
6

Water and
community
7

Figures
8

Donate
to the Mobile
Health Unit
9

Outlook
10

Thanks/
Donate
11

Contact
12

Vision

As pioneers in organic cotton, we advocate for vital soils and biodiversity. We aim to create space for small-scale development and to ensure the human rights of farming families.

The organic cotton farmers, our partners and inspiration

The deep connection to nature among those engaged in organic agriculture in the global south is rooted on a profound understanding of, and respect for natural processes and the value of the environment: They promote biodiversity and create habitats for insects and birds, which help with natural pest control.

Organic cotton farmers tailor their cultivation methods to the local climate conditions, soil types and other factors. They observe and learn from nature. This approach enhances the field resilience and minimizes the need for external inputs. The knowledge and dedication of the organic cotton farmers

inspire and motivate us as a funding institution. Together, we foster sustainable development opportunities. Farmers aspire to live independently and with dignity, realize their full potential and create optimum living conditions for future generations. 14,000 families collaborate with 5,216 production units, cultivating cotton with the bioRe Sustainable Cotton certification in Tanzania and India. This makes them part of the target group for social and environmental projects run by partner organizations of the bioRe Foundation.

Embedded within their village communities, the organic cotton farmers serve as role models for organic agriculture in their region. Furthermore, the village residents benefit from the social facilities provided by bioRe partner organizations, namely water supplies, education and healthcare. The 25-year partnership with the farmers forms the foundation of the bioRe Foundation. Their concerns, desires and challenges are our program.



The right to development

RIGHT TO
DEV
ELO
PME
NT

This year, we focus on the right to development. For organic cotton farmers, the right to development means the opportunity to unleash their potential and improve their living conditions. It involves ensuring their access to resources, education and fair trading conditions, enabling them to implement sustainable farming practices and achieve a decent income. The right to development also means involving the farmers in decision-making processes. Thereby enabling them to secure their livelihoods, strengthen their communities and contribute to a sustainable and fair future.

Through its long-term collaboration with the farming families, bioRe Foundation strives for sustainable changes at the individual, family and community levels. It promotes the farmers' self-determination and independence, and supports them in achieving their goals and building a better life for themselves and future generations.

Editorial



Dear Donors,

the bioRe Foundation is dedicated with heart, commitment, and expertise to the social and ecological empowerment of farming communities in India and Tanzania – for the farmers who cultivate organic cotton.

Through the bioRe Foundation, we can combine organic cotton-growing with a holistic sustainability approach, through regular dialogue and close collaboration with the local communities. We advocate for comprehensive social and ecological responsibility, aiming to strengthen the local communities and embedding fairness, health and education along with knowledge of organic agriculture.

The local people are our cooperation partners, who significantly shape the future perspective of the bioRe Foundation. It is a partnership on equal footing that, over the many years of joint efforts, has developed stable structures across numerous projects making locally a significant societal contribution. With this Annual Report, we reflect on an important year for the bioRe Foundation, which has oriented itself toward the future of its collaborative partnerships and on serving as a bridge between farming communities and supporters of the development programmes.

We sincerely thank all of you for your support, and trust in our collaborative work.

Marion Röttges

President of the bioRe Foundation 2022-2023



New Managing Director

Nicola Roten

CEO bioRe Foundation

Dedicated and passionate, Nicola Roten has been advocating for the empowerment and economic self-sufficiency of disadvantaged populations for 15 years. She brings expertise in microfinance, organizational development and international cooperation. Last year, Roten took over as managing director of the bioRe Foundation. The close collaboration with organic farming enterprises and their trading partners Remei AG and Coop, the Foundation's founders, makes the bioRe Foundation a unique, business-oriented and attractive platform for global learning.

Stay up-to-date throughout the year. Sign up for the newsletter here: <https://biore-stiftung.ch/en/newsletter/>

What we do

8%

Entrepreneurship

Promotion of entrepreneurship and income generation through the provision of start-up capital, training, mentoring and coaching, as well as the promotion of collaboration



7%

Innovation

Promoting the development of innovative technologies and tools for agriculture



40%

Agriculture and biodiversity

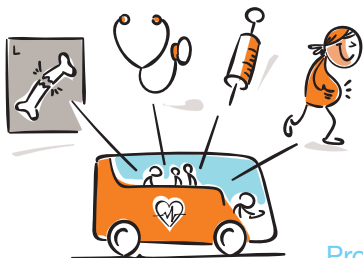
Seed research, strengthen capacities, education in organic farming and biodynamic agriculture, agroforestry



30%

Health

Promotion of integral health, access to basic healthcare



15%

Education

Access to primary education and vocational training for children of farming families



Our partners

The partners of the bioRe Foundation are local organizations in Tanzania and India that represent farmers' interests. The approximately 14,000 families engaged in the production of cotton bearing the bioRe Sustainable Cotton quality label are involved in the impact of the bioRe organizations' projects. The producers are registered as members with the local society partner organization bioRe Association India and as beneficiaries of the bioRe Foundation Tanzania.

A committee of farmers' representatives elected by the members meets regularly to discuss farmers' concerns. This committee decides on the social projects in each organization and submits proposals to the bioRe Foundation in the areas of agriculture and biodiversity, health, education, entrepreneurship, and innovation.



Justina Samson

Programme Manager bioRe Foundation Tanzania

Justina has been our contact person in Tanzania for 15 years. She has a Master's degree in social work. Her project portfolio includes drinking water supply, reforestation, construction of smoke-free stoves, farmer training, and alternative income-generation initiatives.



Aashish Joshi

Programme Manager bioRe Association India

Aashish has been our contact person in India for 14 years. He has a Master's degree in social work. His project portfolio includes running schools and a vocational training centre, a mobile clinic, various community-based entrepreneurial initiatives, seed research, training for farmers, infrastructure improvements for farming families, and technology innovations.

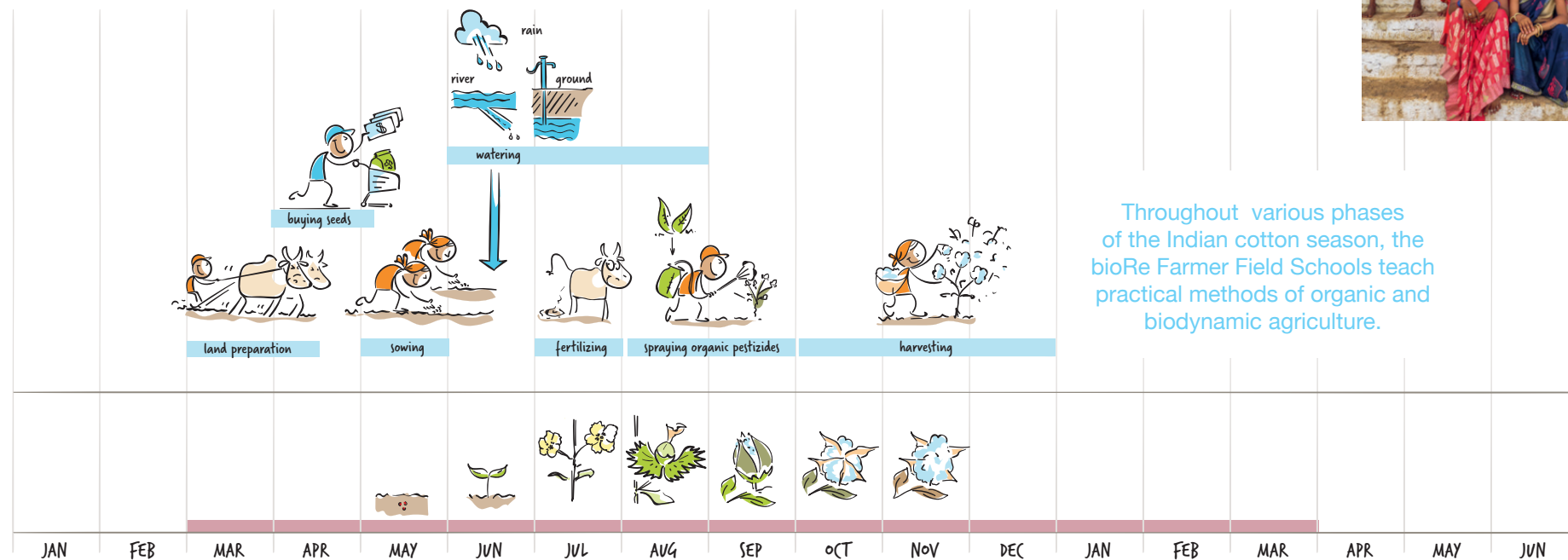
Review

Who's behind the organic cotton

The debt trap of conventional cotton production in India is a familiar dilemma for farmers. High input costs create financial dependencies from which they can hardly break free on their own.

Thanks to the bioRe training programme, Kiran and Dayaram from Bhadi in rural India, transitioned their conventional farm to organic farming. In the bioRe training, the couple learned how to produce their own organic fertilizers and pesticides, saving production costs and preserving their soil. "Organic and biodynamic agriculture not only brings us financial benefits, but also health benefits," says Kiran. Since going

organic, their crop yields have increased. Like all bioRe Association members, they practice intercropping. In addition to cotton, they produce wheat, corn and soyabeans, which strengthen their household budget and contribute to a healthy family diet. "Organic farmers have significantly fewer skin and respiratory diseases, as they don't use chemical substances," says bioRe's chief health officer Dr. Shahina. The bioRe training is conducted in "Farmer Field Schools" – providing knowledge transfer in the field, from one farmer to another. Every year, over 15,000 participants are trained in organic and biodynamic farming methods. The participatory learning and working methods are continuously evolving. "Every year, the failures rate in quality testing decreases, thanks to our training programme and the active participation of our farmers," reports training manager Karma Ji. Kiran and Dayaram's family see organic and biodynamic farming not only as a profession, but as a lifelong commitment.



Water and community

Drinking water supply in Tanzania

Water supply in the Meatu cultivation area is challenging. Women trek long distances to fetch water from the river. Since the start of the project, the bioRe Foundation has facilitated the construction and maintenance of 185 water wells and 53 water tanks in schools, hospitals and other institutions. This benefits approximately 66,900 people who now have access to clean drinking water.

Half-yearly checks of the water quality at these facilities are crucial. If bacterial contamination is detected, the Foundation collaborates with local authorities to purify the water. Responsibility for the maintenance and management of the drinking water facilities is gradually transferred to the community. Last year, six new water users' groups were formed.



Drip-feed irrigation in India

The ministry of agriculture subsidizes drip-feed irrigation for farmers in India. Through the WAPRO project implemented by Helvetas, over 800 female farmers have learned drip-feed irrigation methods resulting in increased productivity.

Farms using irrigation systems are less dependent on irregular rainfall and can grow wheat, maize or beans during mid-season. This allows them to increase their income opportunities, which in turn reduces their dependence on the cotton harvest.

Figures

Target group of the bioRe Foundation	2021/2022	2022/2023	2023/2024*
Number of organic farmers with access to training	15 379	5999	15 006
Number of families with access to drinking water	5012	5180	5656
Number of children in primary school (years 1 to 5)	874	879	825
Secondary education	115	84	80
Vocational training	-	-	30
Number of treatments on health bus	8356	7245	12 000

Project expenses	2021/2022	2022/2023	2023/2024*
Agriculture and Biodiversity	114 134	35 265	281 451
Education	81 157	108 911	98 619
Health	-	88 570	280 761
Entrepreneurship	33 333	47 023	40 463
Climate	33 114	75 532	65 297
Innovation	-	-	18 400
Programme contributions	420 305	224 994	-
Total	682 043	680 295	703 490

*Forecast data

Go to financial report and annual financial statements:
<https://biore-stiftung.ch/en/news/jahresbericht-2022-23/>



Children with access to basic education (preschool and primary)

1214

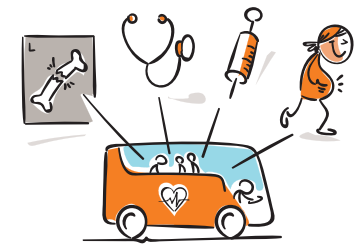
People with access to drinking water

66 900



Participants in women's groups

800



Total patients treated

139 881

Number of farmers with access to training courses

15 006



Donate to the Mobile Health Unit

A little bus with a big impact

The Mobile Health Unit in rural India has already successfully treated over 139,881 patients and it conducts health checks for more than 2,500 children each year. Additionally, the operators provide preventive education on health and hygiene topics.

Dr. Shaina Ansari, the responsible physician, is the driving force behind the project. Together with her team of five, she has transformed the Mobile Health Unit into an established and government-recognized service.

Due to a change in the law, the bus is now too old for the road and needs replacement, along with an expansion of services. Your donation can help Dr. Ansari to continue providing medical care for thousands of people in the future.

Donate to the new Mobile Health Unit now:
<https://biore-stiftung.ch/en/donations/>



Outlook

The bioRe farmers' seed vision

Our goal is to ensure access to genetically modified organism (GMO)-free seeds, for the long-term income security of organic cotton farmers in India. Since 2011 the bioRe Foundation has invested around CHF 1 million in research. The twelve years of efforts of the bioRe research team have yielded promising varieties.

For the developed seeds to be used large-scale field trials are needed to demonstrate their performance under field conditions. The decision on their use for production, however, ultimately lies with the farmers.

Empowering the bioRe community in the global south

The bioRe community is a learning system. The knowledge and experience of farmers are invaluable and sustain the entire value chain alive.

In the coming year, knowledge exchange in the global south will be strengthened. The fieldwork experiences and expertise from Tanzania and India will be connected and enhanced through closer collaboration among local partners. The bioRe Foundation is investing in new technologies for improved data management, from the field to the office. The availability of information for the farmers and their local representatives will contribute to the sustainable empowerment of the bioRe organizations.



Thank you

We would like to express our gratitude to all donors who support our projects, our long-standing partners Remei AG and Coop Sustainability Fund for their solidarity, the local partner organizations for their tremendous efforts, and the ambassadors of the bioRe family who have stood behind the foundation for 25 years and continue to carry it forward. Thanks also to the following companies and institutional donors for their especially generous contributions and collaborative efforts: Panoco, Ikeuchi, Maas Natur, Carbotech, Einhorn, Grüne Erde, Lanus, Fussl, Elkline,

ZRCL, Leopold Bachmann Stiftung, Stiftung Edith Maryon, Schöck Familien Stiftung, Stiftung Dreiklang, Stiftung Sonnenschein, U.W. Linsi Stiftung, Swiss Agency for Development and Cooperation (SDC), Helvetas, GIZ.

Many thanks to Coop for enabling implementation of this annual report.

Donations

Foundation's donations account

IBAN: CH21 0844 0625 6162 9000 4
SWIFT: BCLRCHBB

You can donate here

<https://biore-stiftung.ch/en/donations/>



Foundation board

Marion Röttges, President



Pia Bracher, Vice-President



Andrea Kramer, Member



Simon Hohmann, Member



Managing Director

Nicola Roten



Contact

bioRe Stiftung

Lettenstrasse 9
CH-6343 Rotkreuz

info@biorestiftung.ch
Te.: +41 41 798 32 32

www.biore-stiftung.ch

